

PRODUCED BY:
French & Pickering
 CREEKS CONSERVATION TRUST



Hopewell Big Woods is the largest remaining contiguous forest in southeastern Pennsylvania. This 73,000-acre woodland in the Pennsylvania Highlands is the perfect destination for recreational and cultural experiences just miles from the heart of Philadelphia. Here explorers will find nationally significant hiking and biking trails, historic sites, pristine streams, and hundreds of plant and bird species. This beautiful landscape includes the extraordinary French Creek State Park, Hopewell Furnace National Historic Site and the Schuylkill River Trail.

Led by French and Pickering Creeks Conservation Trust, some 40 government agencies, private non-profits and municipal entities comprise The Hopewell Big Woods Partnership. With a goal of preserving at least 15,000 acres of unbroken forest, the Partnership works to protect and preserve the landscape while enhancing its enjoyment for this and future generations.

To learn more, visit HopewellBigWoods.org.



THERE'S SOMETHING FOR EVERYONE IN HOPEWELL BIG WOODS

- HIKING:** Miles of beautiful trails
 - FISHING:** Exceptional Value Streams: French Creek, Hay Creek, Mill Creek
 - BIRDING:** Audubon Important Bird Areas
 - HORSEBACK RIDING:** 35 miles of the Horse-Shoe Trail
 - PADDLING:** Schuylkill River, Hopewell Lake, Scotts Run Lake
 - CAMPING:** Tents, RVs, and cabins in French Creek State Park, rustic camping in William Penn State Forest
 - CYCLING:** Scenic roadways and miles of trails
 - ROCK CLIMBING:** 60-foot, fixed-pin rock wall at Birdsboro
 - HUNTING:** State Game Lands and French Creek State Park
- Plus, charming local restaurants and inns*



DID YOU KNOW THE HOPEWELL BIG WOODS INCLUDES...?

- Important Bird Area, PA Audubon
- Important Mammal Area, PA Wildlife Federation
- Exceptional Value French and Hay & Mill Creeks, PA Dept of Environmental Protection
- Most important wetland in Chester County Natural Areas Inventory

ACCOMMODATIONS

COMFORT INN & SUITES POTTSTOWN Pottstown, PA 610-326-5000 pottstownnci.com	HILTON GARDEN INN Exton, PA 610-458-8822 hilton.com
DAYS INN POTTSTOWN Pottstown, PA 610-327-3300 daysinn.com	HOLIDAY INN EXPRESS MORGANTOWN Morgantown, PA 610-286-3000 holidayinn.com
HAMPTON INN Limerick, PA 610-495-6999 hamptoninlimerick.com	YELLOWHOUSE HOTEL Douglassville, PA 610-689-9410 yellowhousehotel.com

RECREATIONAL RESOURCES

BIRDING pa.audubon.org	ORIENTEERING dvoa.org
CYCLING berksmountainbiking.org bicyclecoalition.org berksbicycle.com bikeschuylkill.org takeitoutdoorsadventures.com	PADDLING schuylkillriver.org schuylkillriveroutdoors.com topwatertrips.com
GEOCACHING earthcache.org	ROCK CLIMBING birdsboroclimbing.com
HIKING trails.dcnr.pa.gov	SCHUYLKILL HIGHLANDS CONSERVATION LANDSCAPE schuylkillhighlands.org
HORSE-BACK RIDING hstrail.org smfhorses.com	SCHUYLKILL RIVER HERITAGE AREA schuylkillriver.org
HUNTING & FISHING fish.state.pa.us pgc.state.pa.us	PA DCMR dcnr.state.pa.us explorepattrails.com
IRON AND STEEL TOURS ironandsteelheritage.org	

WINERIES, CRAFT BEER, AND DISTILLERIES

BRANDYWINE BRANCH DISTILLERS Elverson 610-901-3668	RIDGEWOOD FARM WINERY Gibraltar 484-509-0100
HIDDEN RIVER BREWING COMPANY Douglassville 484-273-2266	SLY FOX BREWERY Pottstown 484-300-4644 slyfoxbeer.com
MANATAWNY STILL WORKS Pottstown 484-624-8271	STONE BARN WINERY Pottstown 484-985-8077
	WEST HANOVER WINERY Spring City 484-985-8077



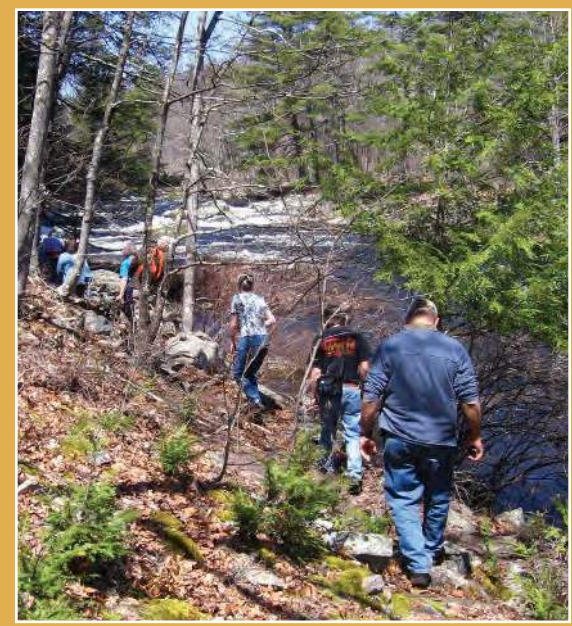
RESTAURANTS

THE BLUE ELEPHANT Pottstown 484-949-9084	INN AT ST. PETERS VILLAGE St. Peters Village 610-469-2600 theinnsaintpeters.com	NUSE'S DELI Morgantown 610-286-6532	TONY JOE'S HOUSE OF GREAT EATS Pottstown 610-469-6419 tonyjoeshouseofgreat eats.com
CHRISTINE'S CREEKSIDE INN Birdsboro 610-582-8150	ITALIAN DELITE Birdsboro 610-404-1115	OLD VILLAGE INN Morgantown, PA 610-286-5050	WEAVER'S ORCHARD FARM MARKET Morgantown 610-856-7300
COVENTRY ICE CREAM PARLOR Pottstown 610-323-0130	KIMBERTON WHOLE FOODS Kimberton: 610-935-1444 Douglassville: 610-385-1588 kimbertonwholefoods.com	PAOLA PIZZA Elverson 610-913-2221	YE OLD COVENTRY PUB Pottstown 610-323-5790
FORK & ALE Douglassville 610-953-3675	LUDWIG'S GRILLE & OYSTER BAR Glenmoore 610-458-5336 ludwigsoysterbar.com	SAINT PETERS BAKERY St. Peters Village 610-469-7501	
GIOVANNI'S PIZZA & PASTA Elverson 610-286-7376	MORGANTOWN COFFEE HOUSE Elverson 484-514-9400	SCOUPE DEVILLE (ice cream, seasonal) Gibraltar 610-582-5259	

CAMPING

FRENCH CREEK STATE PARK
 610-582-9680
dcnr.state.pa.us/stateparks/parks/frenchcreek.aspx#contacts

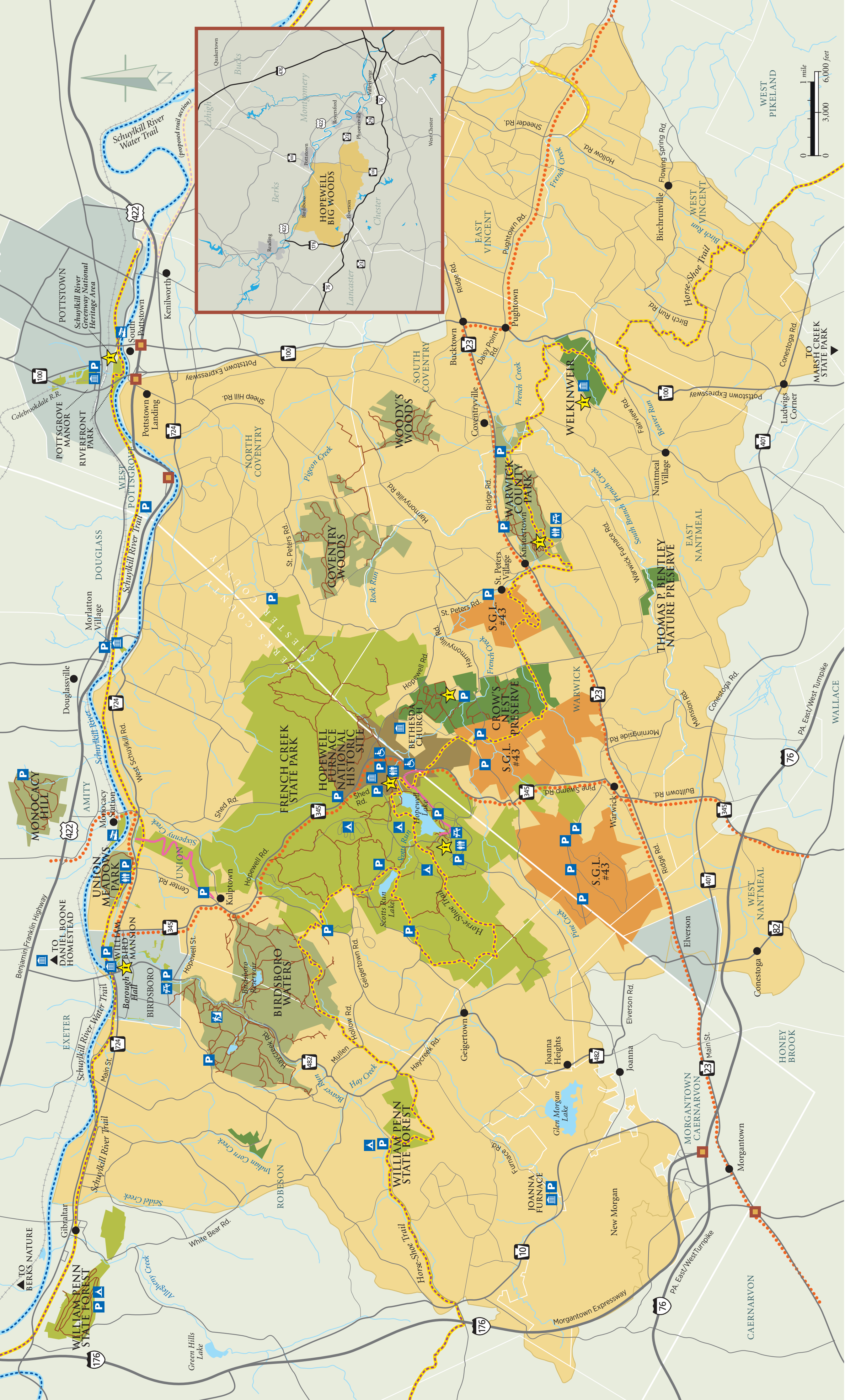
WILLIAM PENN STATE FOREST
 610-582-9660
dcnr.pa.gov/StateForests/FindAForest/WilliamPenn/Pages/default.aspx



hopewellbigwoods.org

Hopewell Big Woods is 73,000 acres of possibilities... come camp, fish, kayak, ride your horse, climb a rock, or just take a good long walk!





hopewellbigwoods.org

MAP KEY:

- Hopewell Big Woods
- County Boundaries
- Municipal Boundaries
- Borough
- Village Center/Crossroads
- Major Highway Exits
- Waterways
- Major Lakes
- Schuylkill Water Trail
- PA Bicycle Route
- Hopewell Furnace National Historic Site
- Conservation Organization Nature Preserve
- State Park and Forest
- State Game Lands (S.G.L.)
- County and Municipal Parks
- Big Woods Trail
- Existing Regional Trail
- French Creek Trail
- Social Trail
- Visitor Center/ Tourist Information
- Historic Attraction
- Picnic Area
- Parking
- Camping
- Public Restrooms
- Rock Climbing Area
- Boat Launch Area